

**LITEC®**  
building systems

**LINZMEIER**  
building elements

**Polyurethane**  
for better insulation®

Flat roof insulation

**LITEC Attica**  
elements

# LITEC Attica elements - for safe roof edge construction without thermal bridging

Pre-assembled, for new and old buildings, with delivery directly to the building site for rapid and cost-effective installation

Slim construction with high insulation values

Keeps gravel and plant substrate on the roof

Overhang for thermal insulation composite systems

Easy mounting with wood cementer

## Safe solution

Simple and elegant raising of the roof edge on existing and new buildings  
Top cover with integrated slope for water drainage  
Robust construction

## Easy installation

Mounting with conventional brackets and straps  
Homogenous transition to facade insulation  
Slim and insulated  
High insulation performance with low construction heights  
With insulationcore made of PUR/PIR rigid foam (TCL 029)





**LITEC Attika element**

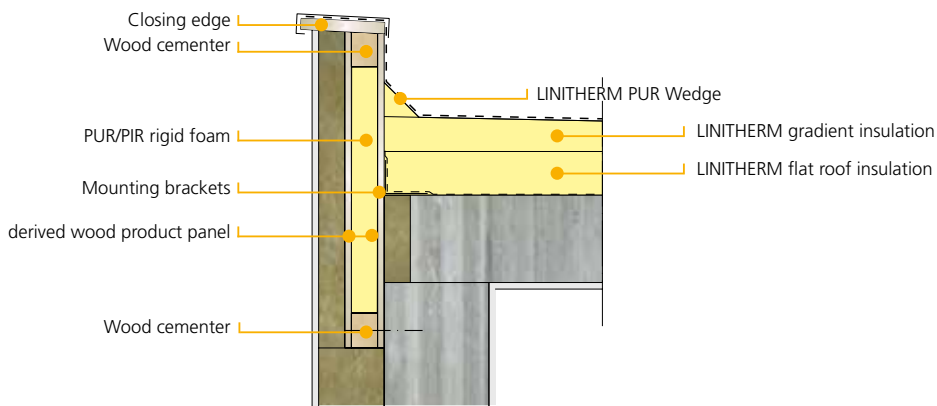
**Insulating core:** PUR/PIR rigid foam according to DIN EN 13165, thickness 60 mm, building material class B2, application type PUR 029 DZ, WH Density approx. 33 kg/m<sup>3</sup>, clad on both sides with mineral fleece

**Outer surfaces:** interior and exterior plywood panel, 15 mm

**Please observe:** factory-made prefabricated parts including wooden construction elements

Thickness mm total	Height mm	Length mm	Quantity unit QU
90	600	2500	m
90	750	2500	m

other thicknesses on request



**Raise roof edges – fast, safe and free of thermal bridges**

The insulated LITEC Attika elements are a cost-effective and safe solution wherever flat roofs need a raised edge.

Example old building renovation: Frequently no attic construction is available, or only one that is too low to accommodate roof structures with increased insulation material thickness grades and waterproofing sheets. Wooden or concrete structures pose the risk of thermal bridges, as opposed to the LITEC Attika elements.

Example new building: Particularly in passive houses, complete insulation without thermal bridges is a must. Instead of expensive building measures, LITEC Attika elements guarantee an attractive and economical solution for the roof edge with regard to structural and thermal insulation aspects.

Ready for installation to the building site: The 90 mm thick elements are 2.50 m long and are secured to the building using conventional dowels, brackets and straps through the wood cementer. The elements can be easily cut to size as required using standard wood processing machines. The top closing edge is sloped for reliable water drainage. The top element cover are delivered separately for transport reasons, but is prefabricated and only needs to be screwed on.

Subsequent work on the flat roof can be performed as usual. In order to enable the ideal insulation of the transition from the roof to the facade, the top cover of the LITEC Attika elements has an overhang and can accommodate facade insulation materials up to a thickness of 180 mm.



**Also from the flat roof range:**  
LINITHERM PAL and PGV flat roof insulation  
LINITHERM PAL and PGV sloping roof  
LINITHERM PUR Wedge  
LITEC Universal flat roof plank  
LITEC Attika flat roof plank

**Linzmeier Bauelemente GmbH**  
Industriestraße 21  
88499 Riedlingen, Germany  
T +49 (0) 7371 1806-0  
F +49 (0) 7371 1806-96

Königshofen  
Schortentalstraße 24  
07613 Heideiland  
b. Eisenberg/Th., Germany  
T +49 (0) 36691 722-0  
F +49 (0) 36691 722-20

Info@Litec.de  
www.Litec.de